

The ILA online atlas of leprosy

Ref.: **The Leprosy Burden: Gabon**
From: **A. Mondjo, Libreville, Gabon**
Editing: **S. Canata, Genoa, Italy**

The Leprosy Burden: Gabon, trends 1991 - 2011

Trends of new cases (NCD) and new case detection rate (NCDR) of leprosy at Country level

Figure 1. Gabon.
Trends of NCD and NCDR of leprosy from 1991 to 2011

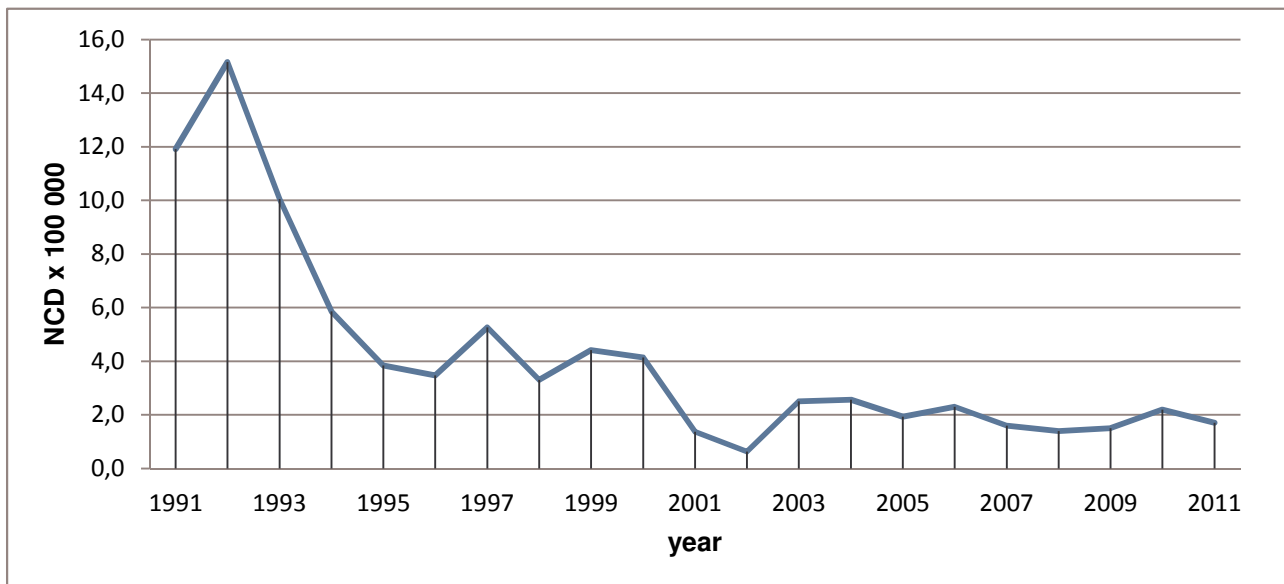


Table 1. Gabon.
Trends of NCD and NCDR of leprosy from 1991 to 2011

year	population	NCD	NCDR (per 100 000)
1991	965406	115	11,9
1992	989882	150	15,2
1993	1014976	102	10,0
1994	1040350	61	5,9
1995	1066359	41	3,8
1996	1093018	38	3,5
1997	1120344	59	5,3
1998	1148352	38	3,3
1999	1177061	52	4,4
2000	1206488	50	4,1
2001	1236650	17	1,4
2002	1267566	8	0,6
2003	1517685	38	2,5
2004	1558662	40	2,6
2005	1600746	31	1,9
2006	1643967	37	2,3
2007	1688354	27	1,6
2008	1733939	24	1,4
2009	1780756	26	1,5
2010	1828836	40	2,2
2011	1878215	32	1,7

Sources

Leprosy data

Programme de Lutte contre les Maladies Infectieuses
 Ministère de la Santé
 BP 50 Libreville, GABON

Population data

Interpolation between Census 1960 and Census 1993
 Census 2003
 Regional TAAs [annual growth rate]